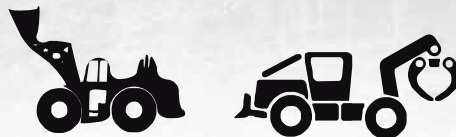




# MS931

## LOGXTRA - LS2 FORESTRY



**Designed for use on demanding forestry equipment operating in harsh conditions, this high strength, belt stabilised tyre provides excellent traction and flotation in severe logging applications.**

- Heavy duty shoulder and sidewall
- Maximum protection from cuts, impacts, and punctures
- Cut resistant compound specifically engineered for forestry service
- Steel reinforced undertread layers
- Extra wide footprint provides exceptional flotation in muddy and wet ground conditions

**MAXAMTYRES.COM.AU**