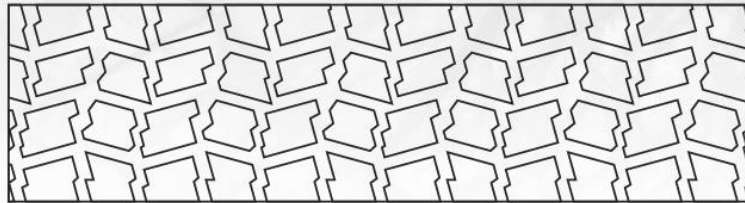




# MS202

**E2/G2/L2**



**The MS202's aggressive self-cleaning tread design provides excellent traction in tough and demanding OTR applications.**

- Wear and cut resistant tread compound.
- Self-cleaning tread.
- Superior winter traction.
- Suitable for loaders and articulated dumpers.
- Excellent traction and flotation.
- Low vibration and excellent stability.

SIZE	STAR RATING	TYPE	RIM	O.D.	S.W.	TREAD DEPTH	INFL. P.	L.C.C (LBS/KG)	INFL. P.	L.C.C (LBS/KG)	LOAD & SPEED
				In	In	32nds	psi	5mph	psi	30mph	
				mm	mm	mm	Kpa	10kph	Kpa	50kph	
14.00R24	*	TL	10.00VA	53.5	15.3	29	80	15200	69	9100	175A2/ 157B
				1359	388	23	550	6900	475	4125	

E&OE. All measurements are based on Maxam and industry standards. Physical tyre measurements may vary slightly.